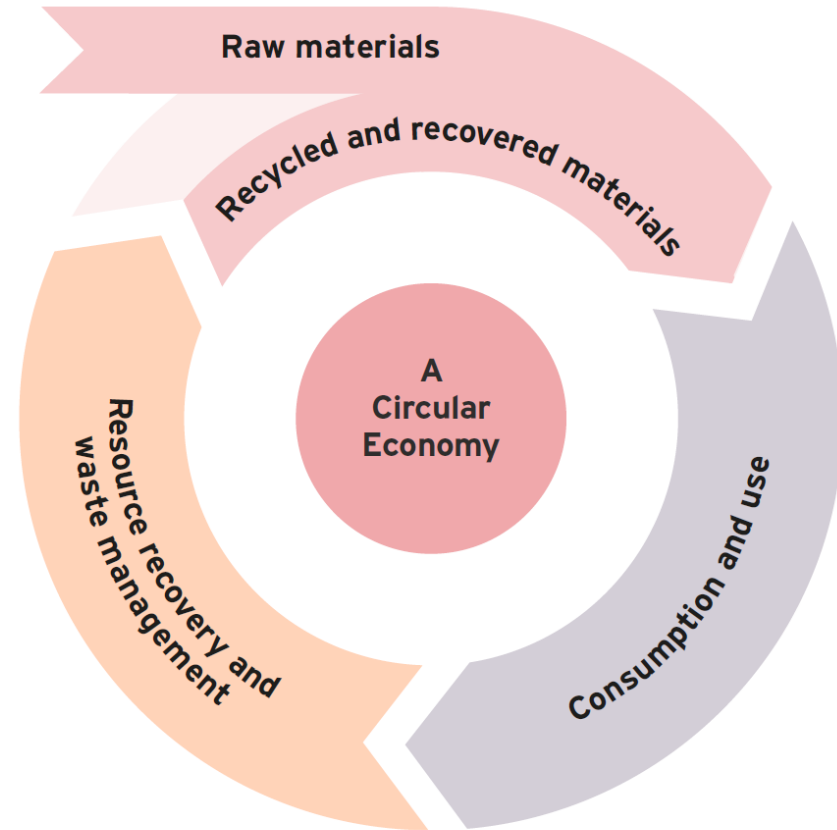

Waste and Resource Management



Call to Action

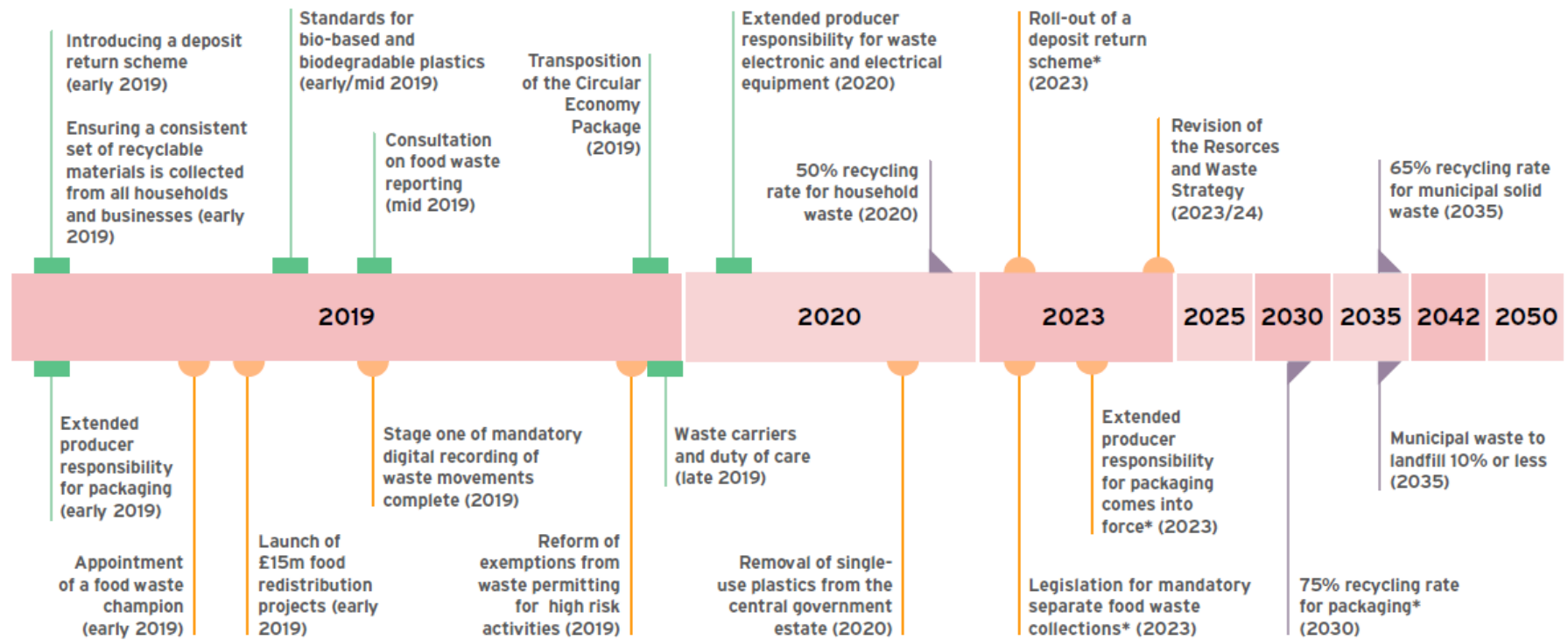
“Our plan is to become a world leader in using resources efficiently and reducing the amount of waste we create as a society. We want to prolong the lives of the materials and goods that we use, and move society away from the inefficient ‘linear’ economic model of ‘take, make, use, throw’.

A more circular economy will see us keeping resources in use as long as possible, so we extract maximum value from them. We should recover and regenerate products and materials whenever we can, giving them a new lease of life.”



Key Actions - national strategy

- Double resource productivity by 2050
- Eliminate avoidable waste of all kinds by 2050
- Eliminate avoidable plastic waste over the lifetime of the 25 Year Environment Plan
- Work towards eliminating food waste to landfill by 2030
- Work towards all plastic packaging placed on the market being recyclable, reusable or compostable by 2025



STRATEGIC AMBITIONS ▲

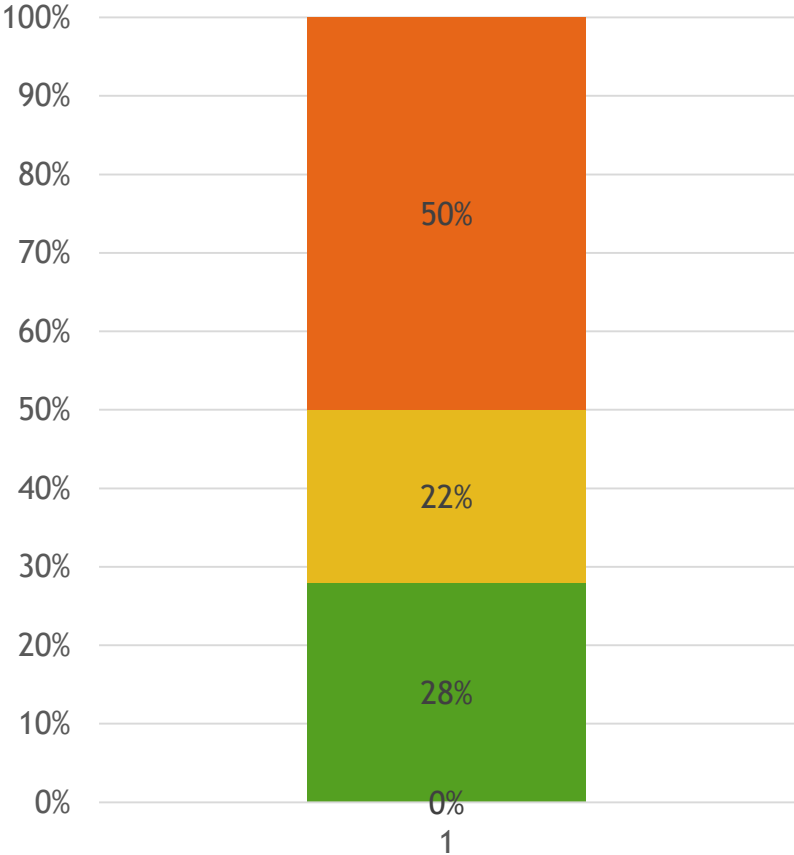
CONSULTATIONS ■

TARGETS ▼

KEY MILESTONES ◐

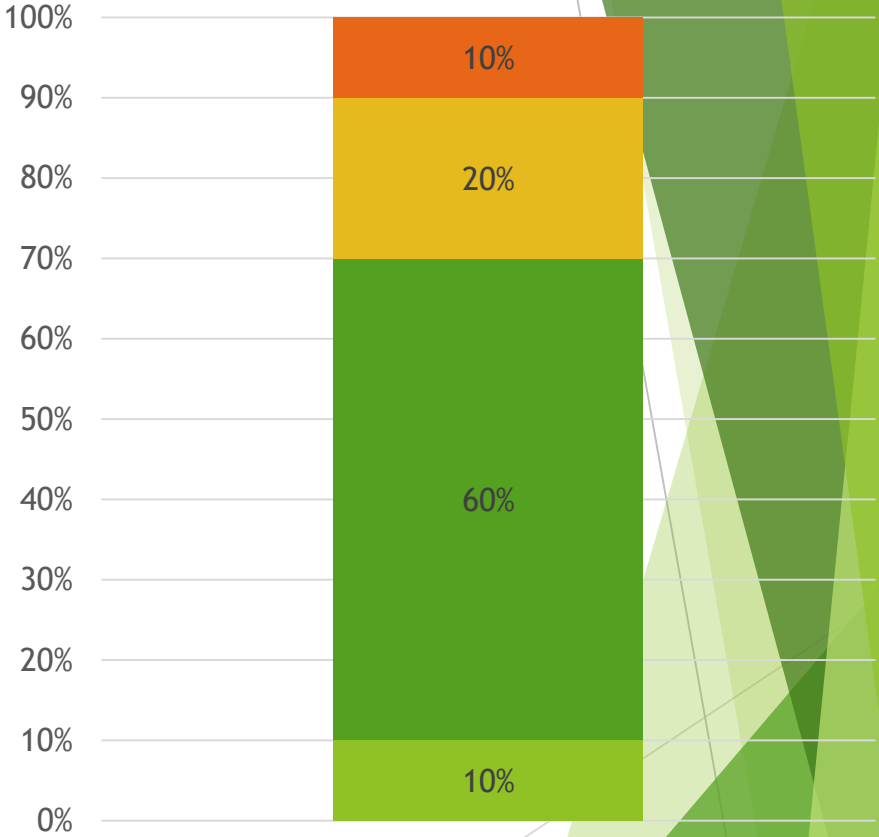
*subject to consultation

IWC Waste Targets



- Re-Use
- Recycle and Compost
- Recovery
- Landfill

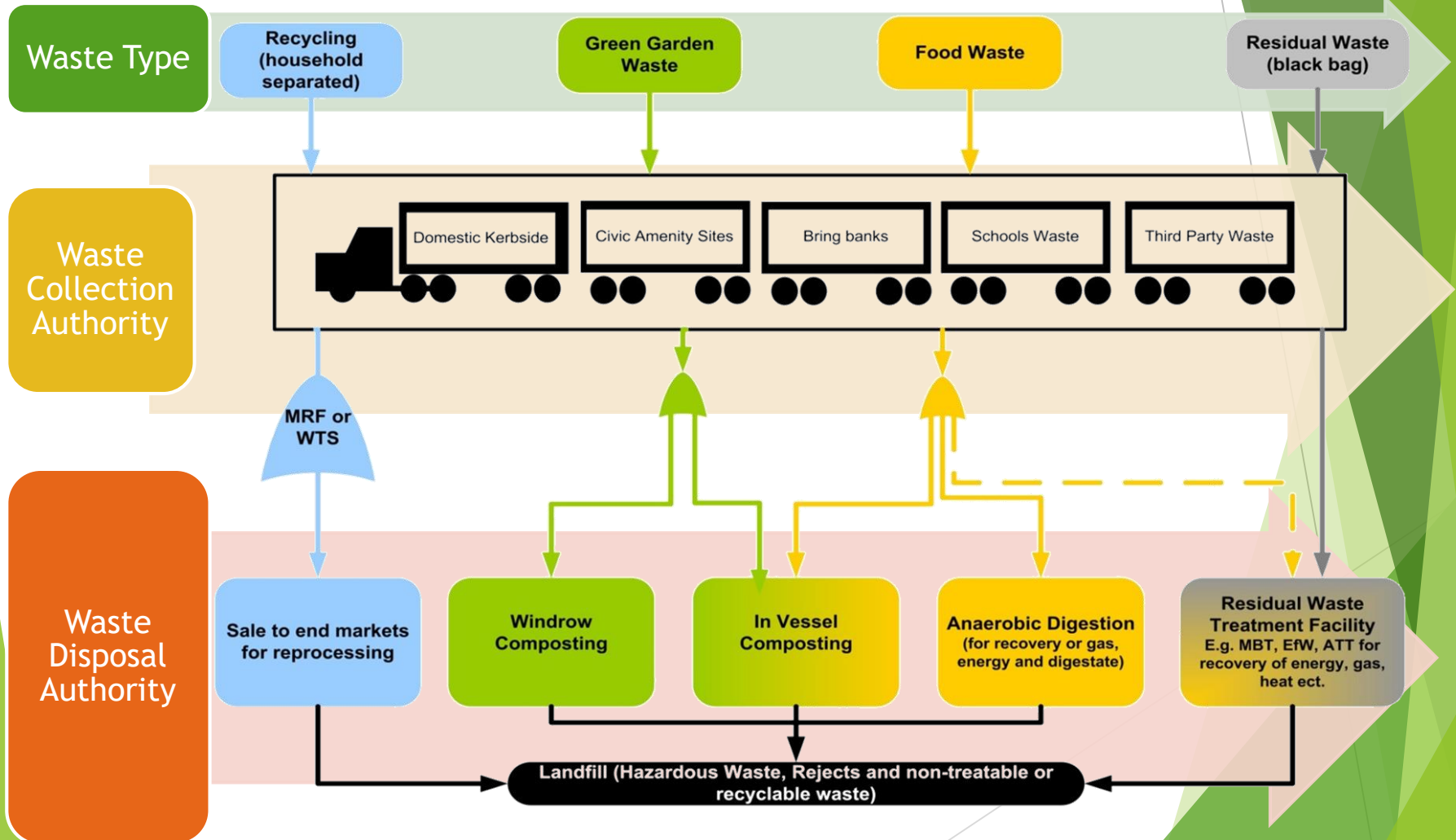
2011/12



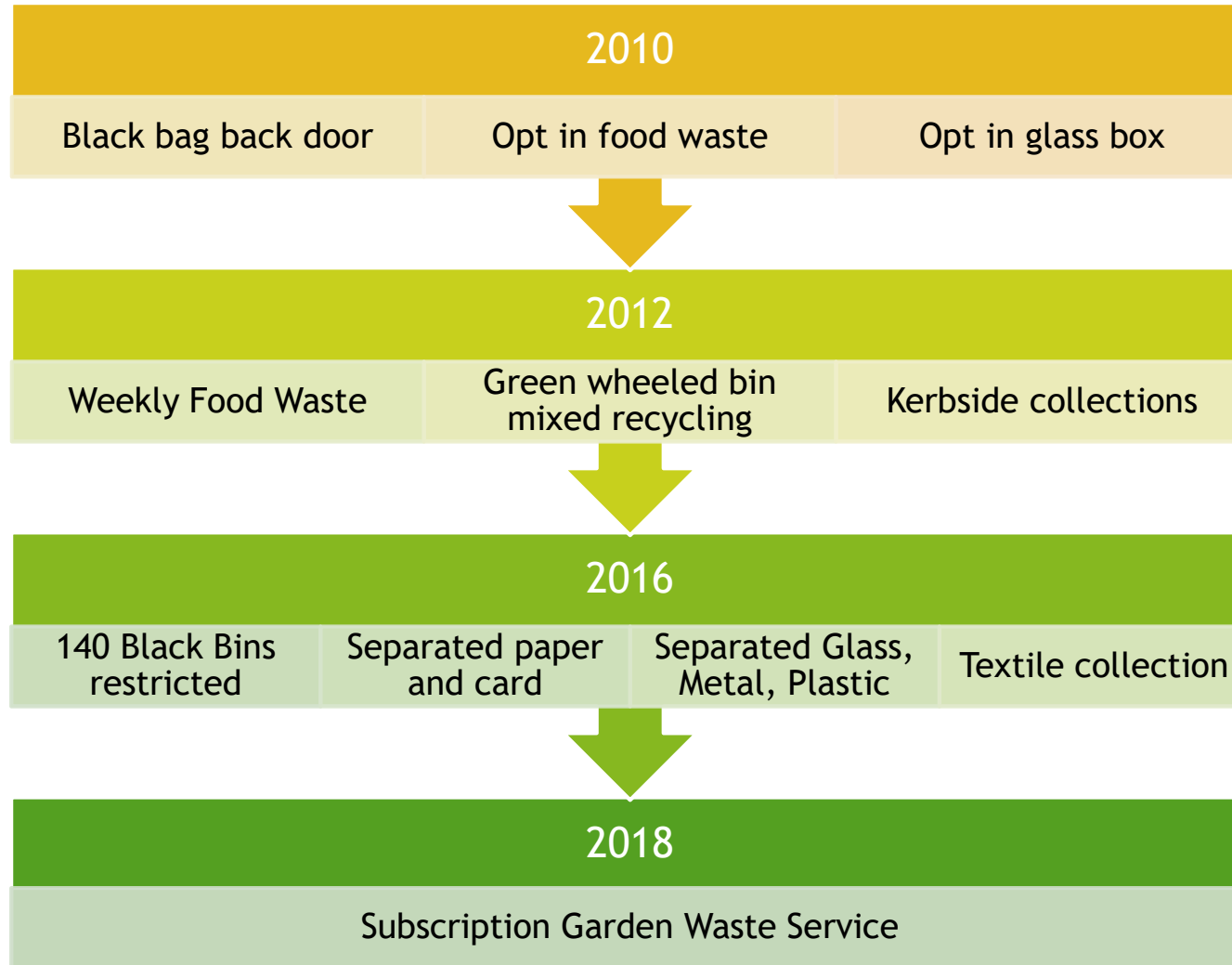
- Re-Use
- Recycle and Compost
- Recovery
- Landfill

2025

Waste Flow



Our Journey



Investing in sustainable solutions

2016 - Improved Afton Marsh Recycling Centre

2017 - Expanded Lynnbottom HWRC & New Commercial Waste Recycling Centre

Winter 2019 -
New Mechanical Treatment Plant
New Energy from Waste Plant

2020 - Plan and deliver Reuse

Business Waste Duty of Care

- ▶ All businesses have a duty to organise and pay for regular waste collections. A business can be requested by the Environment Agency to show evidence of what provision they have in place for their business waste collections and may be subject to legal action if they do not have appropriate plans in place.
- ▶ As a business you must deal responsibly with any waste your business produces in England. This is known as your 'duty of care'. View the GOV.UK information on ['duty of care'](#).
- ▶ Business waste includes any waste that comes from:
 - ▶ Any commercial activity - including any you run from your home.
 - ▶ Construction.
 - ▶ Demolition.
 - ▶ Industry.
 - ▶ Tourism - holiday lets included
 - ▶ Agriculture.

Why reduce re-use recycle

- ▶ Consideration the disposal of product at the point of procurement will help reduce lifecycle costs
- ▶ Reducing waste at source
- ▶ Return to the old ways - china and cloth over disposable single use products?
- ▶ Plastic Aware
- ▶ Recycling costs less than general waste
- ▶ Can you dispose of some wastes for free?
- ▶ Food waste can be sent to make energy and compost

Waste Minimisation

- Reduce the volume of food and green waste in residual waste
- Reduce the amount of single use plastics in landfill
- Promote single use free options for sanitary wear
- Real Nappy campaign
- Textile Consumption Campaign

Fly tip and Litter

- Your waste your responsibility
- Waste Carriers and legal transport of waste
- Promote reuse networks and free-cycle type organisations
- Publish link to list of licenced carriers
- Promote dashcam footage to evidence littering from cars

Commercial CWRC

- ▶ Pay as you throw at the Lynnbottom CWRC give low cost recycling solutions to small and medium business
 - ▶ Lower tier waste carrier to take your own business waste & Debit card required

Material	Per Kilo	Per Tonne
Textiles	Free	Free
Mixed paper and card	Free	Free
Aluminium cans	Free	Free
Scrap metal	Free	Free
Paint	£2 per tin	n/a
Hardcore and rubble	2.1p per kilo	£21.00 per tonne
Mixed glass, bottles and jars	2.3p per kilo	£23.00 per tonne
Green waste	4.4p per kilo	£44.28 per tonne
Hard plastics	10.2p per kilo	£102 per tonne
Wood and timber	12.5p per kilo	£125 per tonne
Plasterboard	15p per kilo	£150 per tonne
General waste	13.5p per kilo	£134.05 per tonne
Tyres	18.1p per kilo	£181 per tonne
Asbestos	36p per kilo	£360 per tonne

Thank you
Any Questions?